

# Academy Garden Club Thymes

A NEWSLETTER FOR THE MEMBERS OF THE ACADEMY GARDEN CLUB OF LENOX

**JUNE 2018**

**Tuesday, June 12, 2018, 7:00 PM**

**Program: Annual Meeting**

**Berkshire Botanical Garden - New Building!!**

**Potluck  
Appetizer: A - M  
Dessert: N - Z**

**Beverages will be provided. (I will remember the wine!) Please bring your own place setting!**

\* \* \* \* \*

Fellow Members,

This past year has been my last as Club President. I now know that an agenda is a very important tool for running a meeting! Thank you to all the members that helped me with this.

It is also interesting to find out that gathering a few of the presenters for our meetings can sound wonderful, but not always pan out as hoped. And then there is the FUND RAISING Booth at the Apple Squeeze. It's so hard to measure what the crowd is going to want in a given year. We do know they love the hydrangeas in any form - wreaths, bunched, tied with ribbons or even made into little bouquets. Maybe we should create a Hydrangea Farm for our next project!! In this way we will have a sustainable income.

And then there was last year when I mistakenly forgot the juice for our Annual Meeting. (That won't happen again!) Thank you Caroline for running out to purchase some sparkling water! Even when not meaning to be, you are supportive such as your comment about the need for an agenda and making them for/with me. Thank you Terry for your subtle help with this!

I will never remember all of the small and even large acts of kindness shown to me during my tenure, but please know that I loved being the President, and I cannot say enough about our

wonderful group of women who come together to not just learn new things, but also for the beautification of the Lenox Community.

Our next President, Jan, will be wonderful! She has been a great help to me in her role as V.P. and I am nothing but confident that she will continue to do wonderful things for our club. It is so nice that our club treasurer has decided to stay on for another term! Thank you Ginny for keeping the books straight for the past few years and for deciding to hang in there for another term.

And Harriet! Moving into the position of VP!! I do hope you can still write your monthly Horticulture notes. They are always so interesting, of the moment, and just plain fun!

Thank you for putting the time into writing your column every month!

Every month we have hot coffee and a nicely prepared table to put our refreshments on. The trash is taken away, and all of this is done quietly (who would know?) by our wonderful Hospitality Committee. Thank you to MaryAnn Coakley and Sandra Merlino!

And thank you to Dianne Romeo for trying so hard to have a Visiting Gardens component to our club. I know it is always so hard to travel to see something with a group and to organize a time when more than a few can come together. Thank you for trying, sometimes successfully, sometimes not.

Please remember that we will be signing up for COMMITTEES at the meeting, so come prepared to join one that interests you.

It would be nice if you could bring your dues to the meeting. They have remained at \$30.00 for an active member and \$40.00 for an associate member. This is a great bargain! You couldn't do much once a month on that amount for ten months of the year, yet we offer a speaker and a treat once a month from September - June!

If you are unable to attend the meeting, please send your dues to Ginny Akabane, 100 Hubbard Lenox, MA. 01240.

# Academy Garden Club Thymes

A NEWSLETTER FOR THE MEMBERS OF THE ACADEMY GARDEN CLUB OF LENOX

JUNE 2018

PAGE TWO

The Town Monument is back on our needs list. There will be a sign-up sheet at our Annual Meeting. Please take the time to do this once during the summer! We are all busy, none of us more than the other! Pick a partner to go with and make an afternoon of it; go to lunch, shop, whatever you want - just make sure to weed and deadhead the Monument!

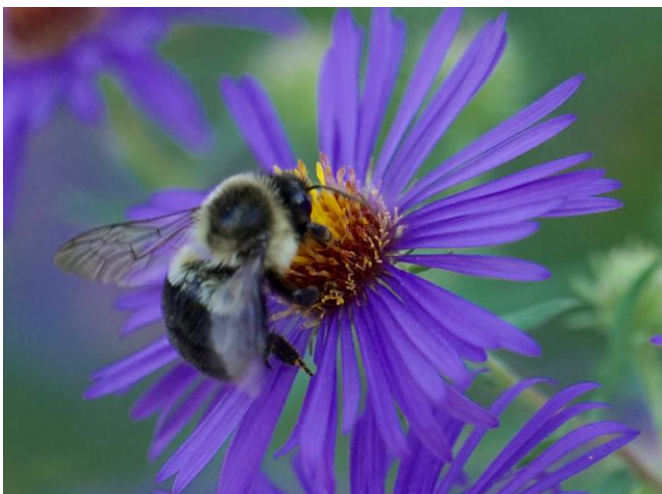
All of this would not be possible without the wonderful, kind help, corrections and reminders from Pat Neri! Every month you receive your newsletter, reminders, and any communications needed from Pat. She is the backbone of our club information. Thank you Pat for a job well done!

Most warmly,  
Anne  
President

\* \* \* \* \*

**The Lenox Garden Club** would like us all to keep in mind they are once again sponsoring a booth at the Harvest Festival at the Berkshire Botanical Garden and looking for donations of lovingly used accessories (scarves, costume jewelry, handbags, etc.). If anyone has anything to donate, please call Ginger Schwartz at 298-5225. They will be happy to pick up or have the donation delivered to her home. Good to keep in mind for Spring Cleaning. This event will be in the fall.

\* \* \* \* \*



## HORTICULTURAL COLUMN

By Harriet Wetstone

Spring has been a bumpy road this year, a few hot days sprinkled into periods of cool and rainy. Cool and wet is wonderful transplanting weather, and wonderful for daffs and tulips and other bulbs lasting extra-long. My wonderful pink azaleas are lasting and lasting, and the lilacs (finally) are gorgeous.

But I must say I am looking forward to those hot sunny days with bees and other insects buzzing about. They're perfect for one of my favorite activities, hanging around with my camera in order to capture close ups of bees and bugs enjoying my flowers. In preparation for what I hope is right around the corner, I spent some time studying up on which bees are which - honey bees, bumble bees, carpenter bees, sweat bees (What? sweat bees?).

Honey bees (*Apis mellifera*) belong to the Phylum Arthropoda; subphylum, Hexapoda, class; insecta; Order Hymenoptera (ants, bees, wasps and sawflies); No Taxon Anthophila or Apoidea -Bees; and finally, Family, Apidae (cuckoo, carpenter, digger, bumble and honey bees and Subfamily Apinae (honey, bumble, long-horned, orchid and digger bees, Tribe Apini -HONEY BEES (*apis mellifera*) which is the European Honey which includes several subspecies! Okay, I thought it was going to be simple!

Whereas honeybees are small and slender, bumblebees are fat and furry. There are many different species of bumblebees all of which have different lengths of tongue - which means they feed from different shaped flowers. All honeybees have short tongues. Bumblebees live in nests with 50 to 400 bees; honeybees live in hives with 20,000 to 60,000 bees. Bumblebees are the better pollinators because of their furry body and assorted nectar sipping capability.

(continued on page 3)

# Academy Garden Club Thymes

A NEWSLETTER FOR THE MEMBERS OF THE ACADEMY GARDEN CLUB OF LENOX

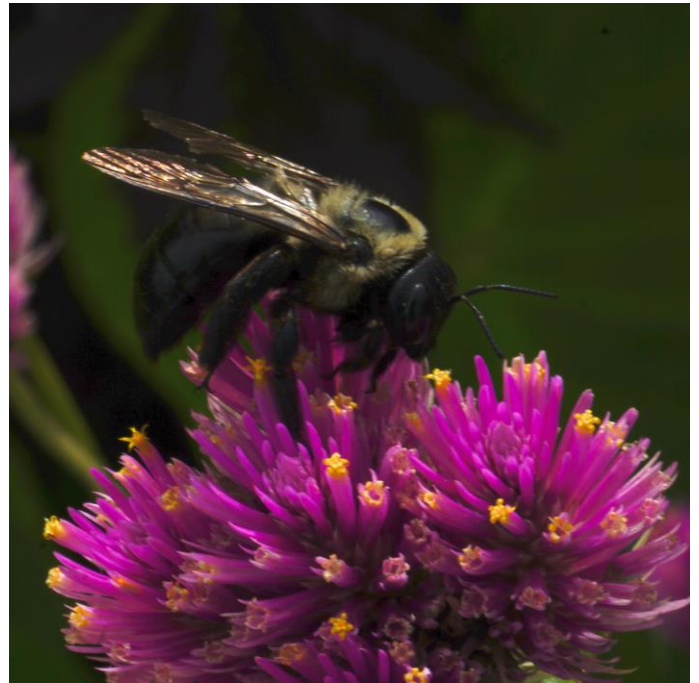
JUNE 2018

PAGE THREE

## HORTICULTURAL COLUMN- continued

I have wondered about the really big bees I have seen. They may be resin bees. These belong to a group of solitary bees in the Megachilidae family, mason bees, which means they build structures. Resin bees use resin which is exuded from the stems, buds and bark of various plants. Actually, honeybees also collect resin, just not so much. Beekeepers don't like it because it is sticky and messy, but the resin that bees bring home and use as water proofing and room dividers also has antimicrobial properties and is instrumental in keeping hives healthy. And yes, resin bees are pollinators as well.

Finally, carpenter bees, excellent pollinators, but unloved when they drill their nests in the wood of your house. Carpenter bees are among the largest of the bees, and they are fuzzy like bumblebees. In addition to pollinating with their furry bodies, they also buzz or vibrate with their powerful thoracic muscles like tuning forks and sonicate pollen out of flower anthers. (Love this!). However, as they are too big to get into small flowers, they are known to 'steal' nectar by slitting the base of the flower and getting nectar without getting anywhere near the pollen!



So now when you see a bee, see if you can figure out which kind of bee it is. (Hint: sweat bees are gorgeous iridescent green)! Thanks to: Bumblebee Conservation Trust, Honeybee Suite; PerfectBee, Princeton Field Guides, and others.

###